

# THE CAPITAL PETARIAN



## INSIDE THIS ISSUE:

Highlights of Earthquake Relief operations	2
Eid gifts for children	2
Scholarships at CCP	2
Special Thanks	3
Sarbuland Village	4

log on.....

[www.pakistan-earthquake.org](http://www.pakistan-earthquake.org)

.....and know, complete details of our ongoing projects at AJK

### Editor:

Aamir Mumtaz Gopang  
Kit no. 94101-IQ

## MAJOR EARTHQUAKE IN PAKISTAN— PETARIAN FOUNDATION RELIEF OPERATIONS

In the aftermath of the massive earthquake that shook northern Pakistan, tens of thousands of people died and hundreds of thousands were rendered homeless.

The most affected areas include the Hazara district of NWFP in Pakistan and Azad Jammu and Kashmir. The epicentre of this quake was near Muzaffarabad, AJK. Major towns like Muzaffarabad, Balakot and others were totally devastated.

In response to this national disaster, The Petarian Foundation (TPF) and the Abdalian Association (AA) joined hands to bring about relief to targeted areas within the afflicted belt. After deliberations, it was concluded that the Petarian-Abdalian joint enterprise would provide relief to the villages near Rerah in Tehsil Bagh.

Our initial objective was to provide relief in form of medical aid, food and tents to people affected by disaster in the selected villages around Rerah. Over 1500 tents, 4000



Victims of earthquake, trying to get some food.

blankets and other items were distributed.

In the longer term, we have moved towards development of projects within our means for rehabilitation of this selected area. Such projects include reconstruction of Basic Healthcare Units,

homes, and projects in community development and housing. The latter has materialized in the form of Sarbuland Village where 98 homes have been constructed for widows and destitute people of the region. The 2nd phase will see another 100 homes.

## RECONSTRUCTION OF BHUS

Petarian Foundation signed an agreement with the govt. of Azad Kashmir, Dept of Health on 27th November 2005 to rebuild and operate four of their Basic Health Units that were destroyed during the earthquake. As a part of this understanding, Petarian Foundation is providing doctors, medicines free of cost, and managing

these facilities for a minimum period of 6 months, which can be extendable. The lower staff employed by the AJK govt. continues to work with our staff.

The 4 units under our command are BHU Rerah, BHU Lohar Bela, Forward Health Post (FHP) Seri Gala, and FHP Samni. Cont'd on page 3



Chairman TPF signing MOU with AJK Health Department



*“Our main objective is to promote goodness in the society in all its forms, help the poor and campaign against evil, corruption and oppression in society in all its forms.”*

## HIGHLIGHTS OF EARTHQUAKE RELIEF OPERATIONS AT AJK

We developed an overall plan of relief efforts in order to achieve maximum output from our efforts. This plan was based on:

**Control Centre** at Islamabad with a Village Link through satellite and radio communications.

**Registration** of Villagers by household and extent of damage to each home to determine the quantum of relief supplies require.

**Food Supplies Plan** for the initial period until the villagers are able to cope with their own resources.

**Disaster Health Services Plan** - including casualty treatment, referral to nearest fully equipped hospitals for critical cases and those cases which were beyond the scope of our field hospital, epidemic control, treatment against diseases due to harsh weather conditions, etc.

**Information Plan** - which allowed us to determine the evolving strategies. Our teams moved into the villages to collect the data which was then compiled and analyzed.

**Tent Management Plan** - based on the number of households.

**Communications** - between our team members and with the Control Centre in Islamabad.

**Logistics** - management of movement of relief goods, arrangement of trucks and helicopters, etc.

**Local Help Recruitment and Induction** - to involve the local population to realize the need for self-help and social responsibility.

In order to achieve our objectives, the following actions has been put in place for the Earthquake Relief Operations, Command & Control Centre at Islamabad, Support offices at Karachi, Rawalpindi, Lahore & Kohat. Field relief operations at Rerah, Dist. Bagh, Kashmir

with around 35-40 volunteers including doctors, medical technicians and social workers; field hospital at Rerah, Dist. Bagh, Kashmir; forward medical and relief camps at mountain sites in the middle of villages like Samni, Barikot, Ramikot, etc; logistics arrangements with trucks, 4-wheel drives and other vehicles.

The volunteers at the field operations were rotated on a

weekly basis in order to ensure high level of motivation.

The Field Hospital was initially manned by around 10 doctors during the first week of operations, when the casualties reporting were high. With the number of casualties tapering off by the second week, we reduced the number of doctors to around 4-5. Over time, these have been further reduced to three.

## EID GIFTS FOR CHILDREN AT CAMPS

The Petarian Foundation arranged more than 1,500 sets of colorful Eid clothes for boys and girls up to the age of 14, with funding arranged by Discover Islam and other friends from Bahrain. These clothes were distributed to the earthquake affected children who have been housed at the camps set up by CDA in H-11 Sector of Islamabad.

Mrs. Naureen Mahmud, wife of Shahid Mahmud organized the purchase of gifts.



TPF Volunteers distributing gifts among children at Islamabad camp

## SCHOLARSHIPS AT CADET COLLEGE PETARO

During the academic year 2005-2006, the Petarian Foundation has decided to award scholarships to 8-10 cadets.

The process of scrutiny of applications has begun, and the awards will be announced within the next month or so.

It has been decided to continue scholarship for cadets who availed the same during academic year 2004-5.

It is the objective of the Petarian Foundation to be able to fund up to 10% of the cadets, allowing more qualified candidates from rural areas to avail education at Petaro.

To enforce transparency in the process of awarding the scholarships, the Foundation has decided to form a separate committee of senior Petarians to monitor and select the needy cadets on merit basis.

## SARBULAND VILLAGE

Continued from page 4

The Petarian Foundation has taken the management of the village for the next 5-10 years, providing sanitation services, maintenance of hygiene, operating the healthcare unit, operating the school, supervising other NGOs that will operate the Montessori and Vocational Training Center, roads and building maintenance, operation and maintenance of the electric supply and telephone lines, etc. In other words, the Petarian Foundation is functioning as the municipal corporation for this village.

At present, we already have a staff of over 25 people working at our Bagh operations.

### Special

### Thanks...

The Petarian Foundation is thankful to all those who supported us by donating and by serving in harsh weather of Kashmir as volunteer.

No doubt it is not easy to open your pockets and give your money which is earned by very hardships and also it is not easy to give your own precious time by volunteering yourself.

We hope you will always join hands with us in future also with the same sprit.

We are thankful to those also who supported us morally too.

Presently our Doctors and other staff are living in very cold weather and they need your encouragement.

"May Allah grant those, who helped the humanity, with health and wealth."

(AMEEN)



Mahmood Baweja and Qaisar Zaman (TPF Directors) standing in front of newly reconstructed Basic Health Unit Rerah (AJK)

## RECONSTRUCTION OF BHUs

CONTINUED FROM PAGE 1

Within this short span of time, we have already reconstructed all 4 buildings in a period of around 8 weeks. These are as follows:

BHU Building at Rerah, Bagh, which is around 1,200 sq.ft with 5 rooms

FHP Building at Seri Gala, Bagh (alt. of over 6,000ft), which is around 250 sqft.

BHU Building at Lohar Bela, Tehsil Bagh, which is also over 250 sq.ft

FHP Building at Samni, Bagh, which is around 250 sqft

We have already constructed a fifth building at Sarbuland Village for healthcare.

We have started construction of a sixth building at Seri, Tehsil Bagh, which is midway between Rerah and Seri Gala. Which covers the villages of Kathi and Barikot as well. With these 6 units in place, we are covering primary healthcare facilities for a population of over 30,000.

The buildings constructed are made of sandwich panels (steel sheets on outer and inner surface, with thermopore in between for insulation). The structure is made of angle iron to withstand any earthquake shock. The entire structure is bolted with riveting on the panels.

We have also poured a PCC (cemented) slab for the floor and have done complete electrification of the buildings.

The buildings have also been furnished with desks, chairs, benches, examination tables, stools, racks, etc.

We already have most of the basic medical tools required.

At present, we have 3 doctors employed to run the OPD clinics at these facilities. We also have an overall staff of nearly 20 people to manage these health clinics.

We have also provided homes of same material to the 20 local staff members as well.



*"With the grace of Allah, in a very short time The Petarian Foundation got success to serve this nation. We request all the Pakistanis to join hands with us to serve this Nation"*

## Petarian Foundation

8-A, Street 37, F-8/1,  
Islamabad, PAKISTAN

Regent Plaza Hotel,  
Sharaf Faisal, Karachi, PAKISTAN

Sarbuland Village, Tehsil Bagh,  
AZAD JAMMU & KASHMIR

Phone: (0333) 512-5120  
(021) 565-7031/2  
Fax: (051) 265-2501  
E-mail: 671@petaro.com

We're on the web  
[www.petaro.org](http://www.petaro.org)

*Petarians for Pakistan*

### Board of Directors:

- Kazi Zulkader Siddiqui, 671
- Shahid Mahmud, 74104
- Mahmood Baweja, 7518
- Tajammul Husayn, 439
- Qaisar Zaman, 7523

### Coordinator:

Aamir Mumtaz Gopang, 94101



## *The Petarian Foundation — Basic Facts*

*The Petarian Foundation was registered on the 15<sup>th</sup> of December 2003 under the Societies Act of 1860. While the general aims and objectives of the Foundation are broad, the main focus of the Foundation is to serve Pakistan through service to Petaro and Petarians.*

*All Petarians are eligible to become members of the Foundation.. Following are the categories:*

*Members – (required to pay annual fees of Rs. 1,000 or one-time payment of Rs. 15,000)*

*Fellows – A member who pays a minimum of Rs. 250,000 in addition to membership fees.*

*The Registered Office of the foundation is located at Islamabad, while the operating Secretariat is located at the Regent Plaza Hotel, Karachi. We also have a regional HQ now at Sarbuland Village, Tehsil Bagh, AJK.*

*The activities of the Foundation are currently limited to developing projects at Cadet College Petaro in order to assist in building CCP into a world class institution and serving for the nation in affected areas of Pakistan. Our goal is to work towards giving back to our beloved country for what we have gained personally.*

***We are Petarians for Pakistan***

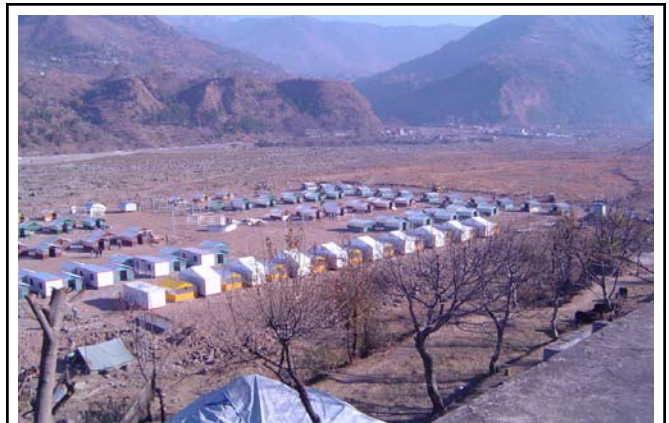
## PETARIAN FOUNDATION WORKS AS MUNICIPAL CORPORATION FOR SARBULAND VILLAGE

Our second major project in the quake devastated area is Sarbuland Village which has been constructed from scratch near Bagh town. This village comprises of the following:

100 homes, that are allotted on long term year lease to widows, destitute, disabled, orphans and other poorest segment families in the area.

A Montessori school, Primary school up to 6th grade, Basic Healthcare Unit, Vocational Training Centre for Women, Camp for the Village Managers, Commercial Centre, Playgrounds, Roads properly planned out, Street Lighting, Community Baths and Toilets, Water Supply System, Electrical supply from the main Utility, Telephone lines.

Each home comprises of one room made of steel



A panoramic view of Sarbuland village

sheets with wood insulation/panelling from inside, and a second room that is an insulated steel container donated by the Turkish Red Crescent Society

In addition, there will be a small kitchenette with each home.

The 2nd phase of 100 more homes construction has started. **Cont'd on Page 3**